

創 | 金沢湯涌 Kanazawa Yuwaku Sousaku no Mori Center for Crafts and Culture 創作の森

Kanazawa Yuwaku Sousaku no Mori
Center for Crafts And Culture



Themes: Creativity, Exchange, Old Traditional Architecture and the Forest.

Japanese deer living in the natural environment of the mountain village, the four seasons and the shape of the forest. Old-fashioned buildings standing face to face with brand new works of art. Precious time spent with good friends...



Kanazawa Yuwaku - Sousaku no Mori, located in a far corner of Kanazawa, can be found at the entrance to the well-known Yuwaku hot springs area. Valuable buildings, from the historical Meiji and Taisho periods, have been preserved for use. The city of Kanazawa has maintained the site, as it is an important part of the new cultural direction of the mountain village.

There are 5 nationally designated cultural landmark buildings that have been refurbished and brought back to life to accommodate indigo dying, weaving facilities, an extensively equipped print making workshop and gallery that is available to everybody. Workshops offer lessons to beginners, and programs allow hands-on experience. Each lecture and seminar program offers lodging and facilities for multi-purpose study and training. A total of 90,000 square meters, with buildings connected by a covered corridor, it is a place that has many possible uses. Visitors can experience nature with picturesque views and wide open spaces, as well as winding paths through the woods and view the plant garden used in the dyeing process. There is hiking and excursions, as well as outdoor events that take place in the large open space. The soothing atmosphere is ideal for the process of creation.



Workshop specializing in the deep and gentle "Japanese Indigo."

Japanese Indigo Studio

- Participant limit: 10
- Equipment: 4 Indigo vats (70cm diameter/90cm deep), 2 Indigo baths (45cm x 150 cm, 150 cm deep), large sink, roofed drying area



■ Self-Discovery Workshop Information

You can experience making handkerchiefs, bandanas, lunch mats, tie dyeing, pattern dyeing, and the wax dyeing process. Charge: 1000 yen to 3000 yen (from 1.5 to 5 hours), half-price for junior high school students or younger. Use of the studio is included. Reservation required. Various courses are offered each month. Please inquire for more details.



Former Nakaya family storehouse:

From the year 1579, the building was used as a storehouse for medicines produced by a pharmacy in Kanazawa's Oyama-cho. Initially, the actual date of construction was not exactly known, however there is a record of an illustration of the Nakaya Pharmacy residence from the 16th year of the Meiji Era, so we can assume it was built around this time. In 1987, the building was used to host the Emperor of Japan when he visited Kanazawa. The actual store itself was removed and reconstructed in Kanazawa's Nagamachi and is presently used as the site of the Kanazawa Shinise Kinenkan (Kanazawa Industry Memorial Hall).

Fermentation of the Indigo dye takes place throughout the year!

The beloved indigo color called "Japan Blue" is a traditional Japanese color and at the same time is known around the world for its use in dyeing blue jeans. In this workshop particular care is used for the natural materials, as chemical dye is not used, and there is a fragrance of the traditional indigo fermenting substance "sukumo". Equipped with four vats and two baths, as well as a chain operated lift, it is possible to create a wide range of work, from small to very large scale. Starting with the long tradition of dyeing thread, tie dyeing and the use of glue and patterns are also used to create a wide variety of expression.



Top:
Inside the studio



Bottom:
Indigo works

The entire creative process workshop,
from thread to dyeing to fabric weaving.

Dye and Weave Studio

- Participant limit: 10
- Equipment: cook stove, large sink, weaving facilities including spinning wheel, etc



■ Self-Discovery Workshop Information

Weaving tabletop coasters
1.5 ~ 2 hour time limit/ charge: 1000 yen, junior high school students and younger 500 yen. Use of studio is included. Reservation required.
Various courses are offered each month. Please inquire for more details.

■ Essential Equipment:

Loom with 105 cm width
Loom with 90 cm width
Looms with 65 cm width
Table top looms with 65 cm width
Table top looms with 40 cm width
Gas stoves
Stainless steel tanks
Stainless steel balls (large, medium, small size)
Steamers (cylinder type)
Washing machine
Stretching board, drying line, various brushes



Former Kanazawa Castle Storehouse:

Former Kanazawa Castle Storehouse: Built in 1922 and moved from the former Kanazawa University Campus, the structure was originally used as a storage facility for the 9th division of the Japanese Army. The decoration on the outer wall was made in 1972 when the building was reconstructed.

How about dyeing and then weaving? Or weaving and then dyeing?

The dyeing area is on the first floor and the second floor is used for weaving. It is possible to weave cloth from the dyed thread, as well as dyeing fabrics. As the studio is located in nature, natural materials are used in dyeing and the colors that are produced by dyeing have the gentleness of naturally occurring colors. Even a beginner can produce a variety of work, from small desktop items to standard pieces to large works. A wide variation of works can be enjoyed, made with textiles, such as cotton, linen, silk, wool and other fabrics.



Top:
Weaving fabric

Bottom:
Weaved works

Create your own artwork,
post cards, posters, t-shirts,
and other goods

Screen Printing Studio

- Participant Limit: 20
- Equipment: image burning machine, dryer, adhering blocks, etc

■ Essential Equipment Used:

- Screen stretcher (B1 size max)
- Plate dryer (120 x 160cm)
- Image burning printer (B1 size max)
- Large printing platform (80 x 120 cm)
- Hand-printing units
- T-shirt printer
- Large textile printer



Former Miyashita House:

Former Miyashita House: At the foot of Mt. Iou, this farm house was originally built in 1920 in Tochio. Often seen in the Kaga and Noto regions, the building is an "Azumadachi" type of structure. From the outside it looks like a typical farmhouse, encompassed by a deep moat that brings back memories of when man depended on horses. It was named a cultural landmark in 1994

Create freely with screen-printing.
Make all kinds of things!

Screen-printing is a process of using a stretched silk square to make a print. With the distinct characteristic of raised ink, prints can be made on paper or cloth, glass or metal, even plastic, as well as textile printing. In this workshop, hand towels, colored paper, post cards, calendars, t-shirts and more can be produced. Of course a variety of original artworks can be created, as facilities allow for the full process of creating the image on silkscreen, making the plates, and printing. It doesn't take long to print your own picture.



■ Self-Discovery Workshop Information

1.5 ~ 2 hour time limit/ charge: 1000 yen, junior high school students and younger half-price. Use of studio is included. Reservation required. T-shirts and larger projects require the one-day course. Various courses are offered. Please inquire for more details.

Top:
Printing on T-shirts

Bottom:
Screen prints

Copper Plate, Lithograph, Woodblock Print Making Basic Workshop

Print making Studio

- Participant 20 for each type, copperplate, woodblock, and lithography
- Equipment: various kinds of presses, erosion room

■ Essential Equipment:

Copper Plate Printing:

- Universal press (160 x 80 cm)
- Etching press (170 x 80 cm)
- Etching press (100 x 52 cm)
- Mezzotint engraving machine (capable of 70 x 70 cm)
- Large aquatint box (capable of 90 x 60 cm)

Erosion room

Lithography:

- Electric press (110 x 85 cm)
- Plank press (110 x 85 cm)

Woodblock Printing:

- Woodblock press (100 cm width)



Ida family distillery:

The building was once located in Gobomachi (Presently Kanazawa's Honcho) near Nishibetsuin Temple. Originally built at the end of the Edo period, it was used as a sake distillery. More than the average storehouse, the walls of the building are rather thick, to maintain a high temperature and humidity. The structure still holds memories of its days as a distillery

Learn to make prints like professionals. Leave it all up to us!

The workshop presents a chance to experience the three basic types of printmaking: copperplate, woodblock, and lithography. The copper plate printing facilities include etching and erosion, aquatint box, and mezzotint, which make it possible to create any type of illustration. Facilities for lithograph printing include a large electric press. For woodblock printing, chisels, other tools and a large press are available. Through the entire workshop, traditional printing techniques are presented. Various kinds of lectures and class are offered.



Top:
Learning about printing.

Bottom:
Course's students' works

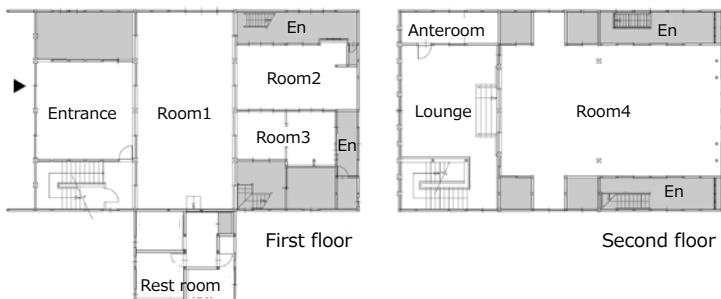
■ Self-Discovery Workshop Information

Make copper plate prints with dry point method.
1.5 ~2 hours limit/ charge: 1000 yen, junior high school students and younger 500 yen,
use of the studio is included, reservation required.

Meetings, training, seminars,
practice, presentations,
multipurpose use.

Seminar House

- Four small and large meeting rooms are available.
- Facilities include: projector, screen, audio system, white board, etc.



■ Facilities:

First floor:

- Room 1 (wooden floor, 60m²)
30 person capacity
- Room 2 (12 tatami mat)
12 person capacity
- Room 3 (9 tatami mat)
8 person capacity

Second Floor:

- Room 4 (wooden floor, 105m²)
50 person capacity



Former Ichitani House:

Former Ichitani House: At the foot of Mt. Iou, in Tochio, originally used as a charcoal making facility, this structure was built in 1924. Often seen in the Kaga and Noto regions, the structure is an "Azumadachi" type of structure. The building's specific characteristic is the large overhanging space under the roof, and inside there is an "oe" hearth sunk in the elegantly varnished floor made from "keyaki" wood. In 2004 it was designated as a national cultural landmark.

The nostalgic atmosphere of a mountain village house and abundant meeting facilities.

A five-minute drive from the hot spring area, people can gather and interact in the quiet atmosphere of the mountain village. The "Kouryukenshuto", or training exchange building, can accommodate small groups, large seminars, lectures, video or motion picture screenings, dance performances, and musical recitals. There are four separate rooms that are available for many different uses, such as business training, university seminars, extra-curricular classes, club activities, retreats, and other activities.



Top : Room4 (2F)

Bottom: Room1 (1F)

Lodging facilities for workshop participants and Seminar House users.

Lodging building

- **First floor:** reception desk, dining space, rest area.
- **Second floor:** 5 rooms for lodging (4 with tatami mats, 1 Western style), bath, and toilet. Accommodation for up to 22 people.



■ Rooms:

- **Akane:**
10 tatami mat room, maximum 6 people
- **Ai:**
10 tatami mat room, maximum 6 people
- **Enjyu:**
10 tatami mat room, maximum 6 people
- **Benibana:**
7 tatami mat room, maximum 5 people
- **Yamamomo:**
Western style room, maximum 1 person

*Each room is named for a plant



The former Tsuji family residence:

This farmhouse was originally built in 1924 and was once in Kanazawa's Domachi, which is now underwater due to the Uchikawa Dam. Large thick beams crisscross the ceiling in a rustic manner, but the room below the beams and second floor bay window combine to give a magnificent sense of elegance to the structure. When the building was moved and reconstructed, the front entrance way was slightly modified.

Visiting artists, overnight seminar participants, student groups are all welcome!



Benibana

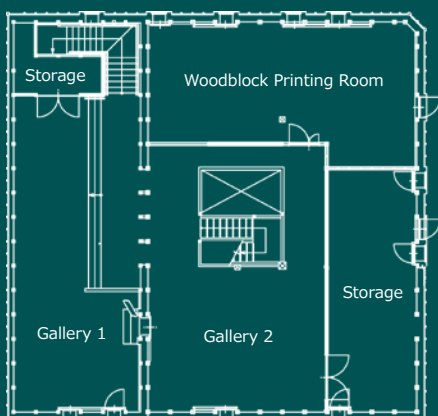


Yamamomo

A Gentle and Warm Exhibition Space, Sousaku no Mori Gallery

Gallery

- Dimensions: Gallery 1 – 66㎡, Gallery 2 – 48㎡.
- Facilities; spotlights, picture hanging rail, sign boards, etc.



Second floor of Print Making Studio

For Solo or Group Exhibitions

On the second floor of the printmaking studio, there are two exhibition rooms that differ in size and shape. Of course works that are produced in the studio can be shown, but the gallery may be used by anybody for various solo exhibitions and groups shows. Located on the second floor of the printmaking studio, there is a wooden floor and a warm atmosphere.



Gallery 1

The pleasure of the four seasons
in a mountain village

The “Koryu” Open Space, Winding Paths

■ Facilities:

“Koryu” open space “Mikatsuki” open space
“Tenbo” open space Walking path

Whether one is enjoying the
sunshine, having a picnic lunch,
or taking a walk

Nature in the mountain village shows the different expressions of the four seasons. There are three open spaces and the botanical garden with plants for dye making, as well as a winding path that encircles the site. It is a suitable site for hiking with family or friends, for sketching, or for having an outdoor tea ceremony. As the “Koryu” open space is a vast open stage with its bowl shaped lawn, it is a great place for winter events, making a snowman, bamboo skiing, sledding, or just playing in the snow.



Top: “Tenbo” open space
Center: Walking path
Bottom: “koryu” open space in Winter

Guidelines for Use of Facilities

■ Studio / Gallery	Morning	Afternoon	*Night	*Full-time
	9:00 ~13:00	13:00 ~17:00	17:00 ~21:00	9:00 ~21:00

Studio	¥360	¥360	¥360	¥1020
--------	------	------	------	-------

All studio (Japanese Indigo Studio, Dye and Weave Studio, Screen Printing, Print Making Studio)

※Late night use, all day use is limited to participants who are lodging overnight.

Gallery 1(66㎡)	—	—	—	¥1080
----------------	---	---	---	-------

Gallery 2(48㎡)	—	—	—	¥1080
----------------	---	---	---	-------

■ Seminar House	Morning	Afternoon	Night	Full-time
	9:00 ~12:00	13:00 ~17:00	18:00 ~21:00	9:00 ~21:00

Room 1 (wooden floor, 60㎡)	¥600	¥700	¥600	¥1900
----------------------------	------	------	------	-------

Room 2 (12 tatami mat)	¥200	¥300	¥200	¥700
------------------------	------	------	------	------

Room 3 (9 tatami mat)	¥100	¥200	¥100	¥400
-----------------------	------	------	------	------

Room 4 (wooden floor, 105㎡)	¥900	¥1200	¥900	¥3000
-----------------------------	------	-------	------	-------

The first floor rooms are all partitioned off. As you may disturb other groups who are using the facilities at the same time, please reserve all of the rooms if making loud noises is necessary.

■ Lodging				Stay
-----------	--	--	--	------

Ai	10 tatami mat room	—	—	—	¥2000
----	--------------------	---	---	---	-------

Akane	10 tatami mat room	—	—	—	¥2000
-------	--------------------	---	---	---	-------

Enjyu	10 tatami mat room	—	—	—	¥2000
-------	--------------------	---	---	---	-------

Benibana	7 tatami mat room	—	—	—	¥1400
----------	-------------------	---	---	---	-------

Yamamomo	Western style single room	—	—	—	¥1200
----------	------------------------------	---	---	---	-------

Lodging is offered to those who are using the workshop studios and the training exchange building for several days. In addition to the charge for lodging, there is a fee for bed sheets (230 yen per person).

Sheets and pillowcases are strictly required. All guests are also requested to sleep on futons. Please bring your own sleep ware and a towel for the shower. Check in is 1pm and check out is 10am. The main gate is closed at 9pm. If you need to exit after this time please make arrangements beforehand. Trash disposal is the guest's responsibility. Cooperation is appreciated.

■ Meals

Please use the first floor only for eating and drinking. For large groups lodging together, we can assist in finding an alternate location for meals. Breakfast and dinner are available (from 2500 yen per person). Please inquire for details.



■ Reservation requests

It is possible to make a reservation from 6 months to 4 days in advance (workshop reservation can be made on the day of participation). Please re-confirm your reservation by telephone (dates are available 6 months before the first of the given month). Those wishing to make reservations must fill out the required forms, which must be submitted to the administration office. The charge for any service (using the required forms) must be paid in full in advance. As a general rule, there are no refunds available.

The information desk hours are from 9am to 5pm.

■ Ride the "Art Bus" for free.

For transportation within the city or suburbs, a micro-bus that can accommodate 32 passengers, is available for large groups and associations. Reservations must be made 3 months in advance.

(As a general rule, the bus is for groups of 20 or more)

■ Entrance and Visitation

Individuals or groups are welcome at no charge to come and visit the facilities, open spaces, walking paths, studio workshops, and training exchange building.

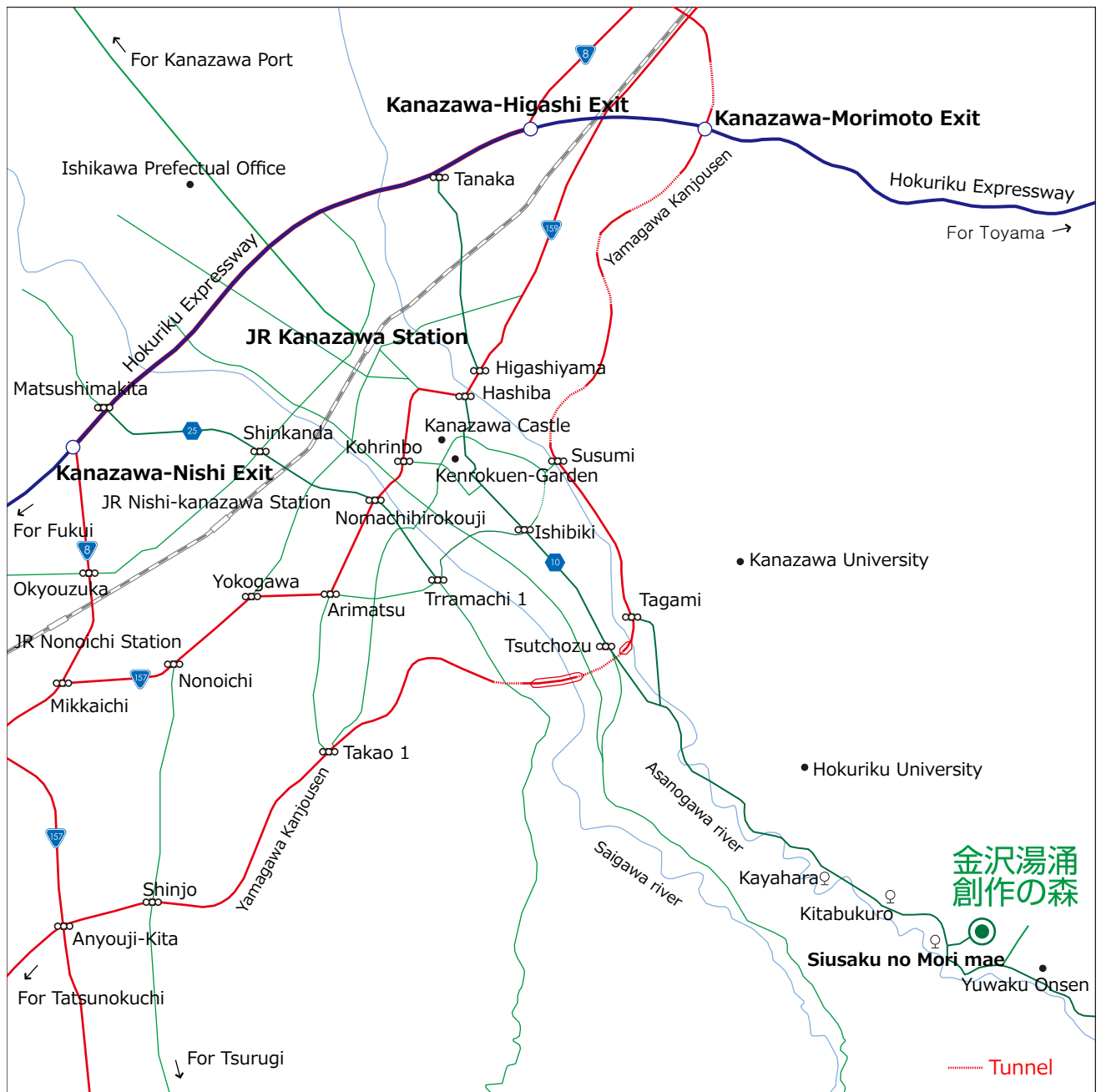
The site is open at 9am and close at 5pm.

■ Lessons, Classes, Workshops

The regularly scheduled lessons, classes and workshops are open to anybody who is interested. Please check the program for times and reservation procedures

■ Additional Information

Be aware that the time of use includes preparation and cleaning up time as well. All facilities and equipment must be returned to the condition that you found them. Lights and air conditioning should be turned off when not in use. Smoking is only permitted in designated areas. Apart from the use in the workshops, fires are strictly prohibited. For use of a copy machine or fax, please inquire at the administrative office.



Kanazawa Yuwaku Sousaku no Mori

Kitabukuro-machi36, Kanazawa, Japan 920-1135

Tel. +81-(0)76-235-1116

Fax. +81-(0)76-236-1070

<http://www.sousaku-mori.gr.jp>



- Open from 9am to 5pm
- Site is closed on Tuesdays (if Tuesday is a national holiday, the site is open but closed on the following Wednesday). The site is closed from December 29th to January 3rd each year.
- 40 minutes by taxi from Kanazawa JR Train Station
45 minutes by bus from Kanazawa JR Train Station (heading for Yuwaku Onsen, get off at Sousaku no Mori Mae)
20 km or 45 minutes from the Hokuriku Expressway, exit at Kanazawa Morimoto, Kanazawa Nishi
Free Parking is available for 100 cars.